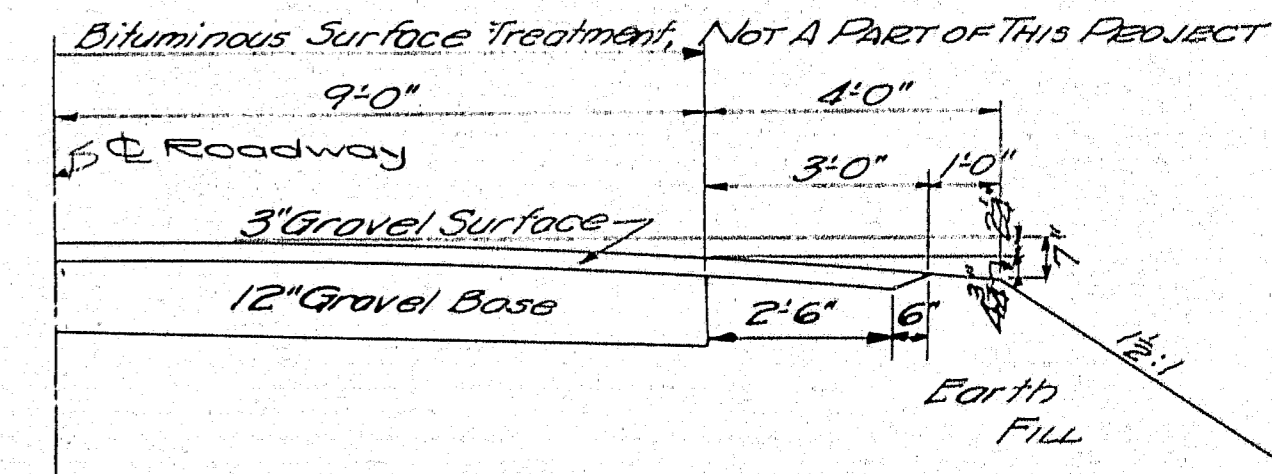


EXISTING SUPERSTRUCTURE: Three-panel, pin-connected, pony steel truss, Warren type, with 3" transverse plank, in fair condition, built by Canton Bridge Co.

EXISTING SUBSTRUCTURE: Abutments and wing walls of split boulders and field stone, well laid in mortar and in good condition.

STREAM: Very swift current, rises and falls rapidly. Low stage about 1 ft. below present level. Ordinary high water reported as 3 ft. below top of ledge hummock, 30' right of Sta 290+35 at Elev. 304.0. Extreme high water of Sept. 1932 driftage at Elev. 307.1 at upstream end wing Abut. 1 and at Elev. 303.7 30 ft. right of Sta. 291+50.4

FOUNDATION: Ledge.



Note - Bridge Project - Sta 289+20 to Sta 291+10

TOWN - 04-21
BRIDGE - 2955.

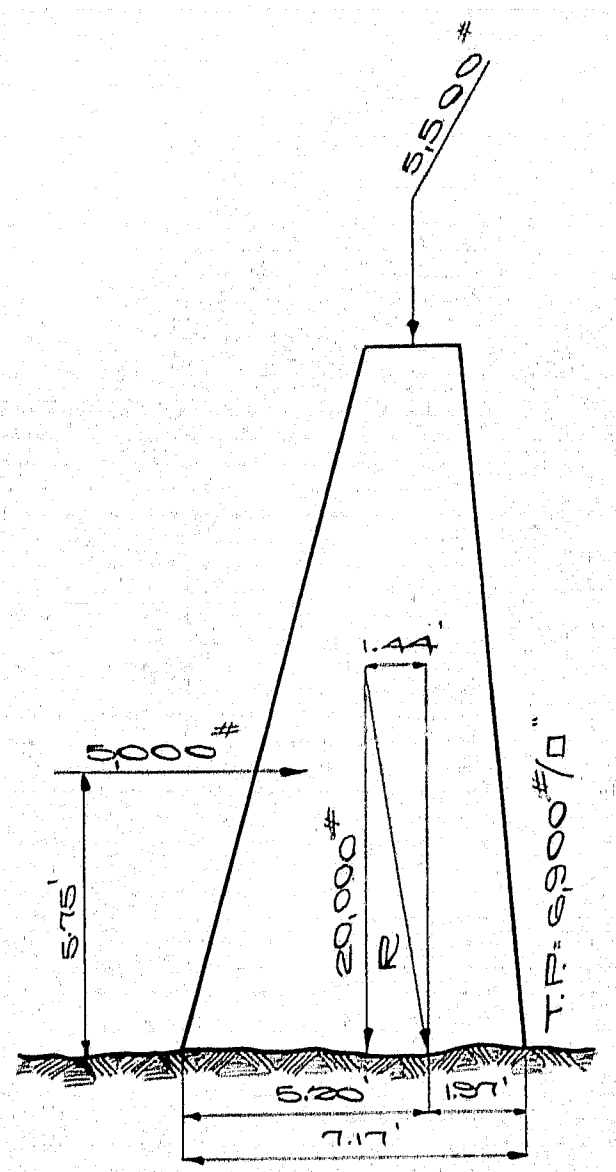
MAINE HIGHWAY COMMISSION
BRIDGE DIVISION.

WING BRIDGE
OVER
SANDY RIVER
IN THE TOWN OF
PHILLIPS, FRANKLIN CO.
SURVEY

Sheet 8 of 11 Augusta, Me., Nov. 1932.

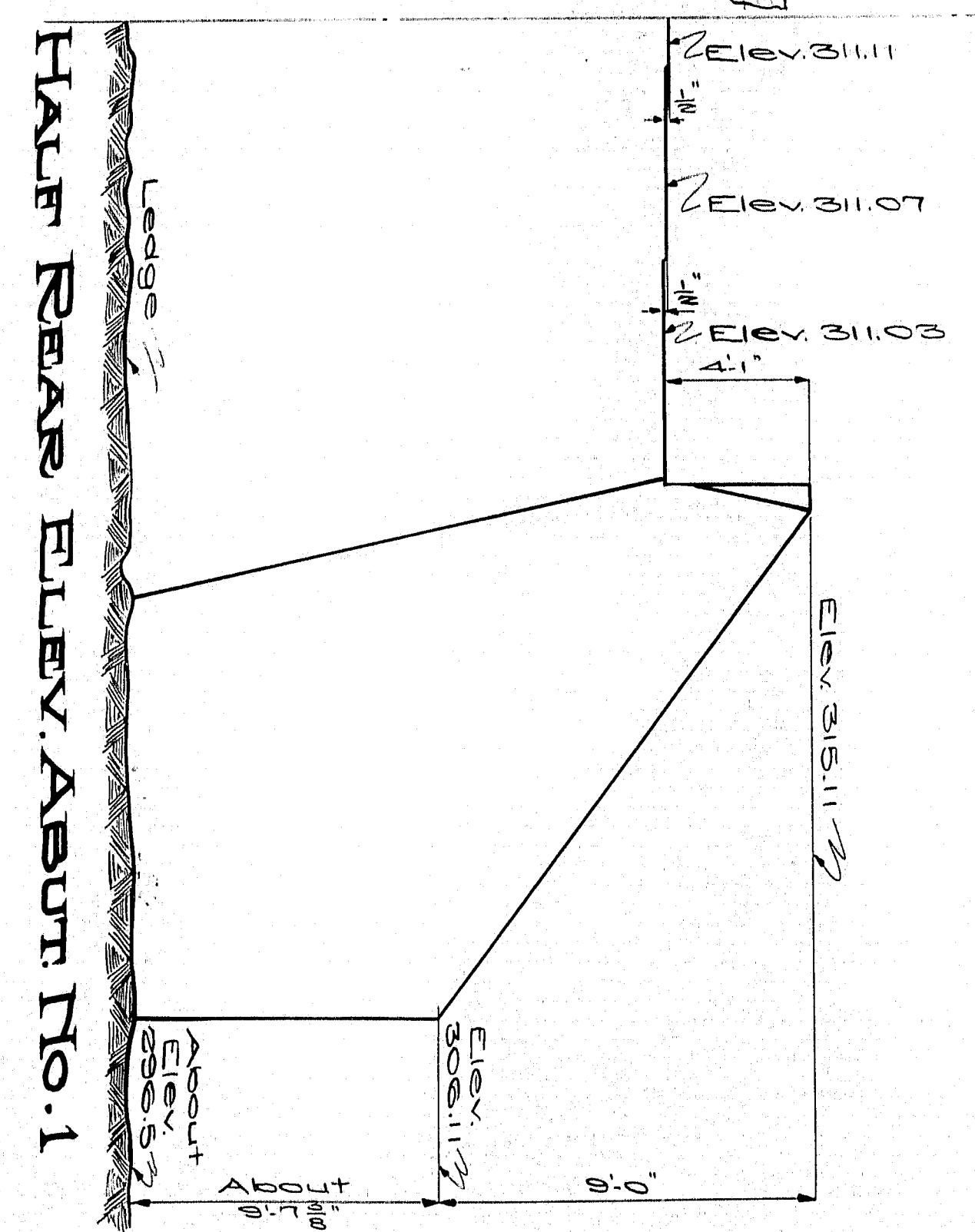
FED. ROAD DIST. NO.	STATE	FED. AID PROJECT NO.	FISCAL YEAR	SHEET NO.	TOTAL SHEETS
9	MAINE	1941-1942	1942	9	11

Note: K. bars to be placed at the junction of wing and breast walls spaced 12" vertically 6" from back of form. Also placed 30" from bottom horizontally below the bridge seat.

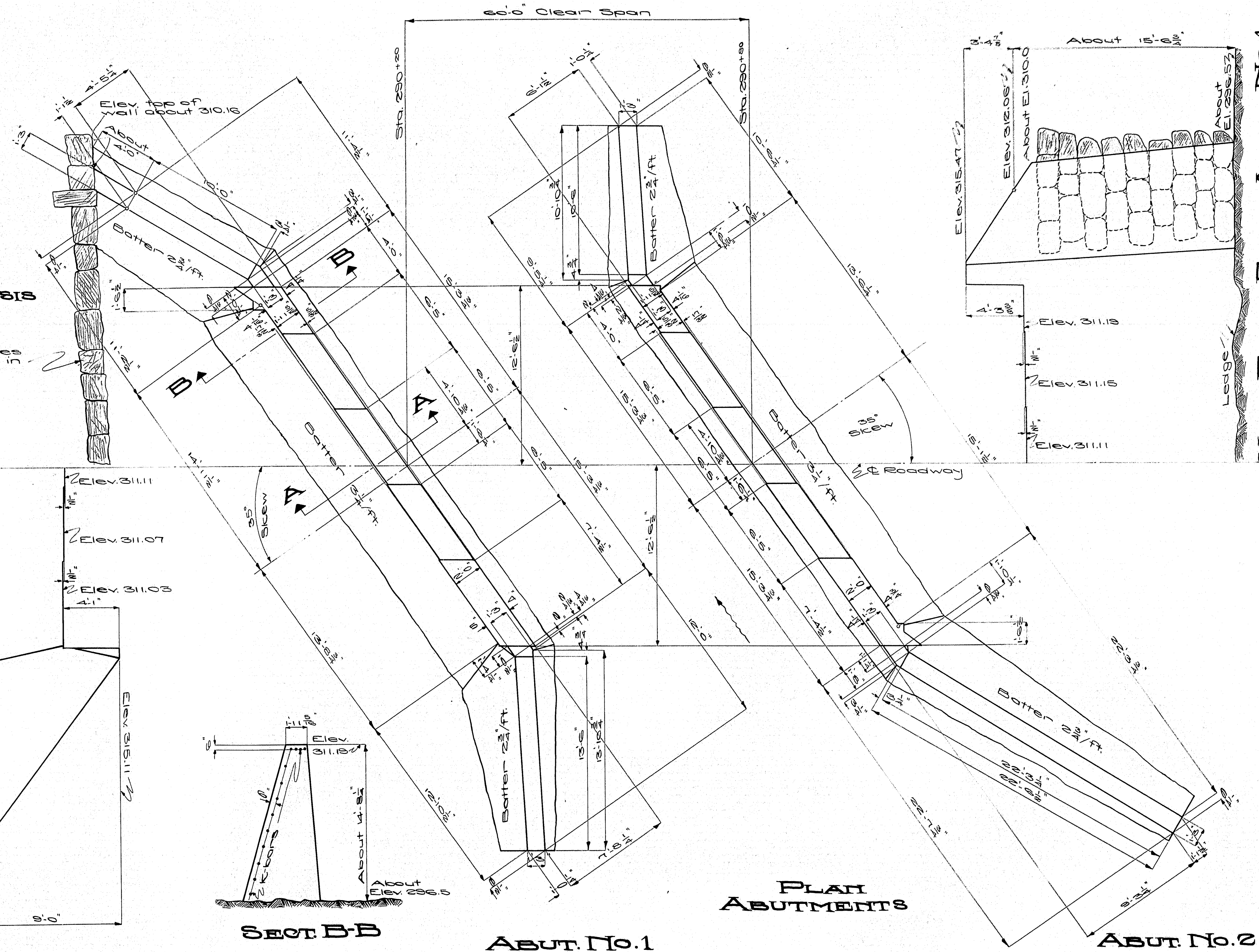


ABUT. ANALYSIS AT A-A

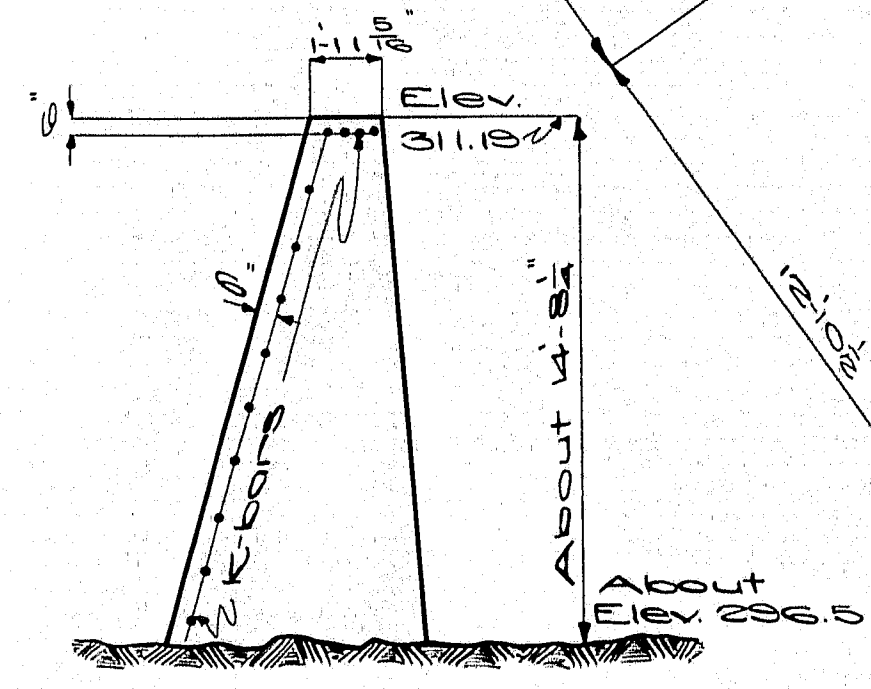
Wall in good condition. No settlement noted.



HALF REAR ELEV. ABUT. NO. 1



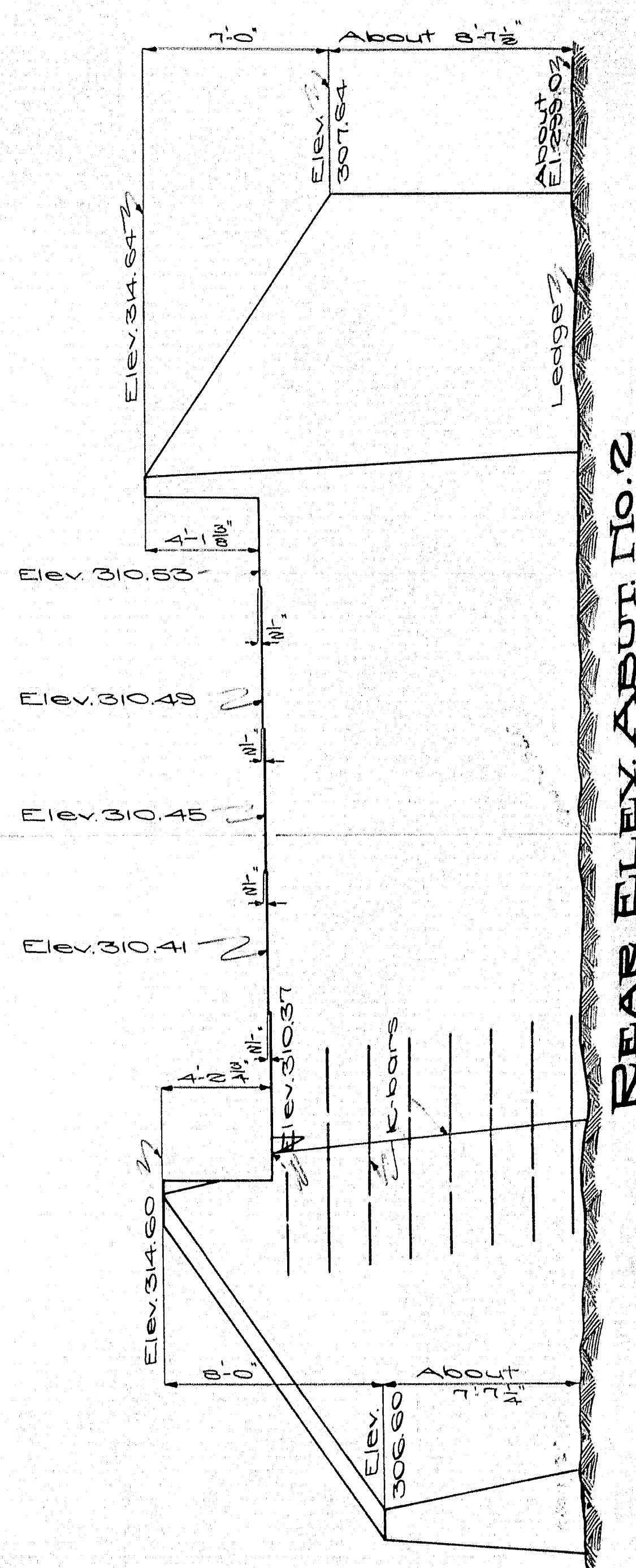
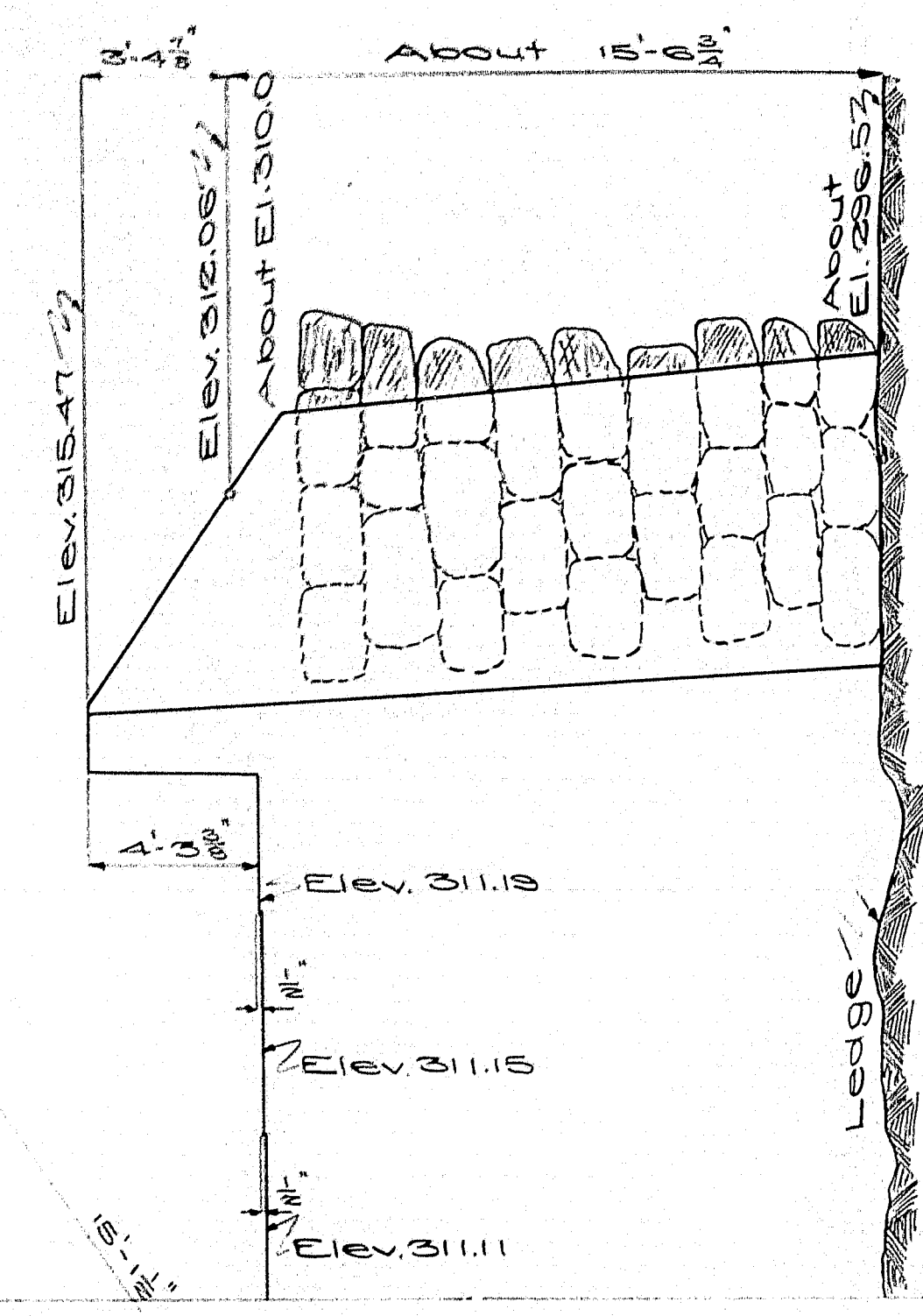
PLAN ABUTMENTS



SECT. B-B

ABUT. NO. 1

HALF FRONT ELEV. ABUT. NO. 1

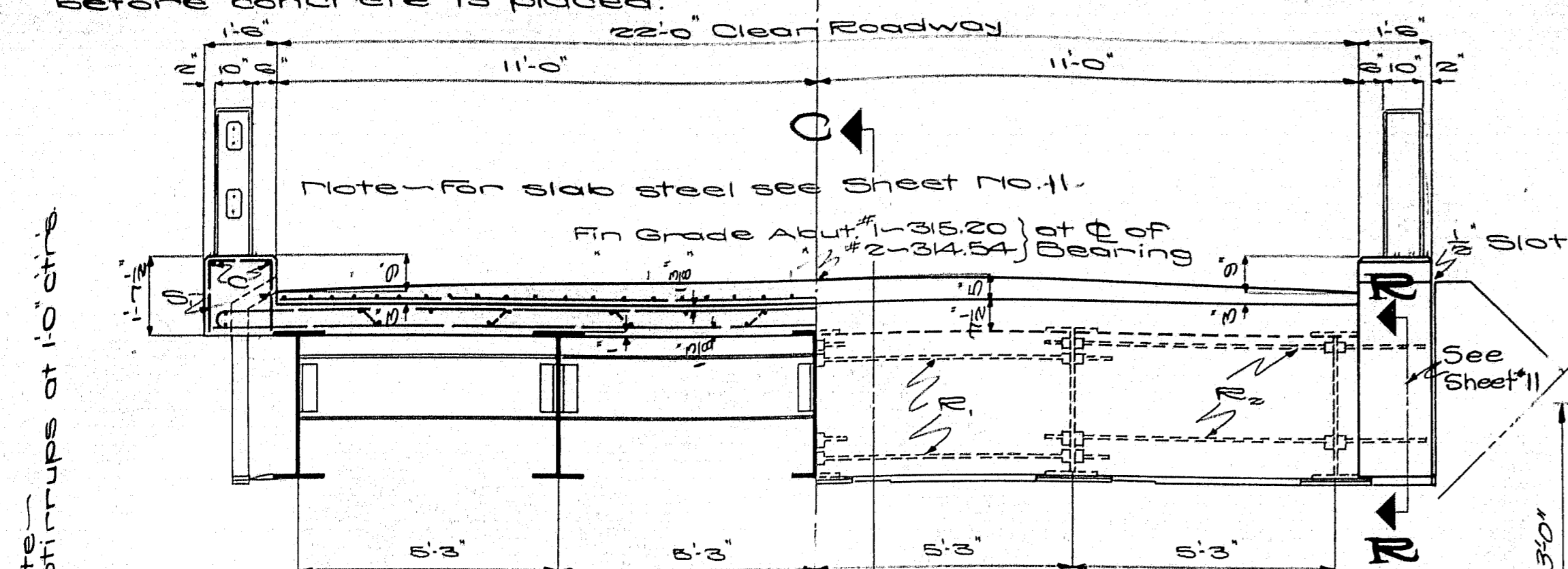


REAR ELEV. ABUT. NO. 2

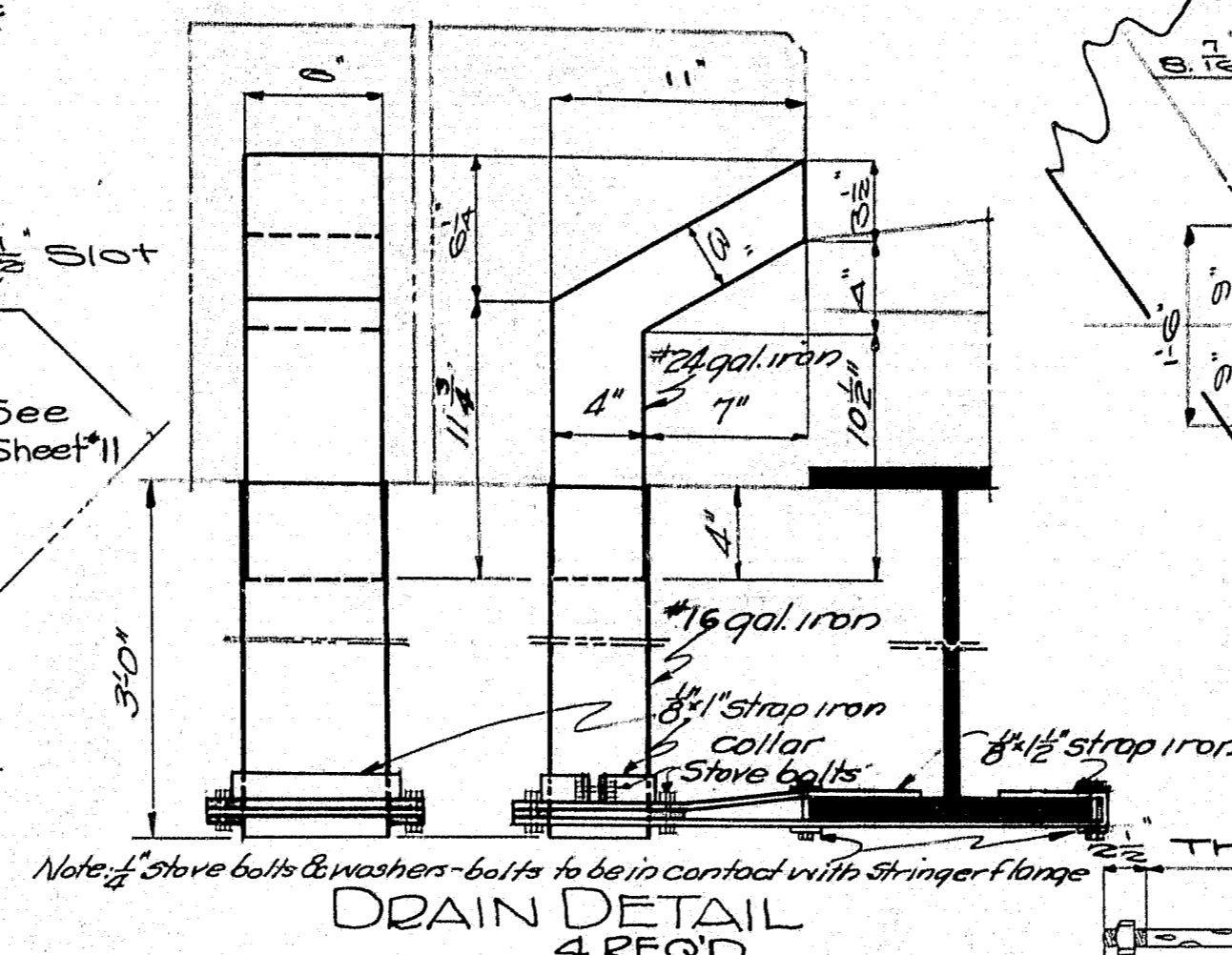
MAINE HIGHWAY COMMISSION
BRIDGE DIVISION
WING BRIDGE
OVER
SANDY RIVER
IN THE TOWN OF
PHILLIPS
FRANKLIN COUNTY
SUBSTRUCTURE PLAN
Sheet 9 of 11 Augusta, Me. 1933

Town - 04-21
Bridge - 2955

Note - Cover the vertical slot between superstructure and substructure on the back side with two layers of roofing felt. Felt to be 10' wide. Coat surface of concrete with each layer as applied with hot tar or asphalt. The area to be covered by the felt is to be recessed 2" by nailing thin strips to the forms before concrete is placed.

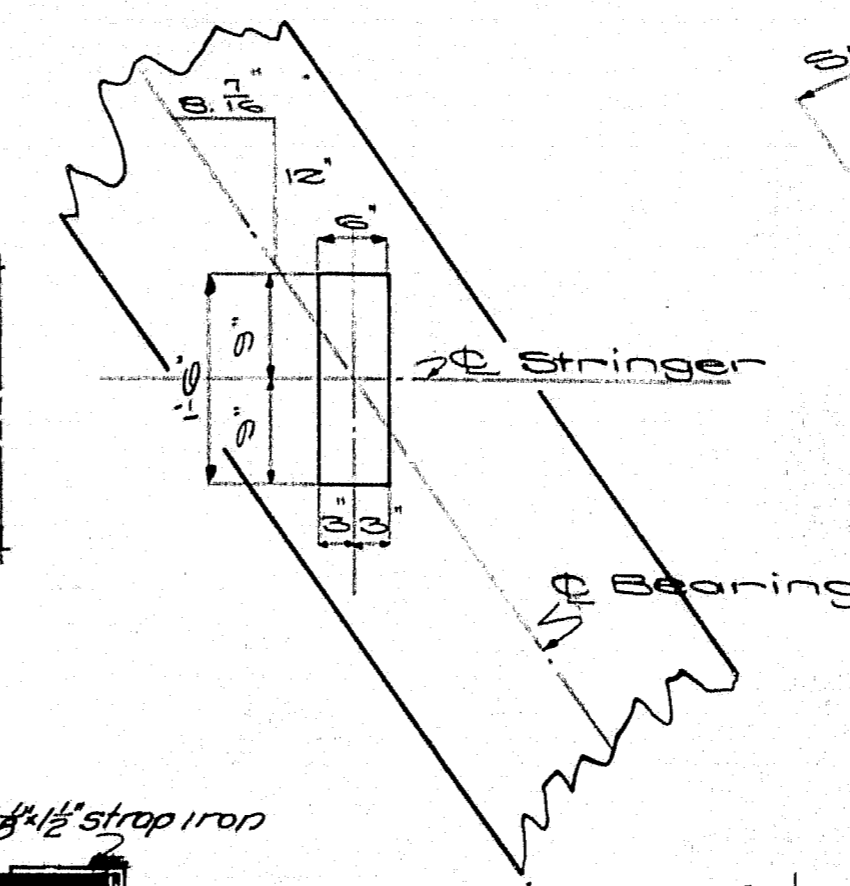


HALF X-SECTION HALF END VIEW
SUPERSTR. AT 15 TO RDWAY C

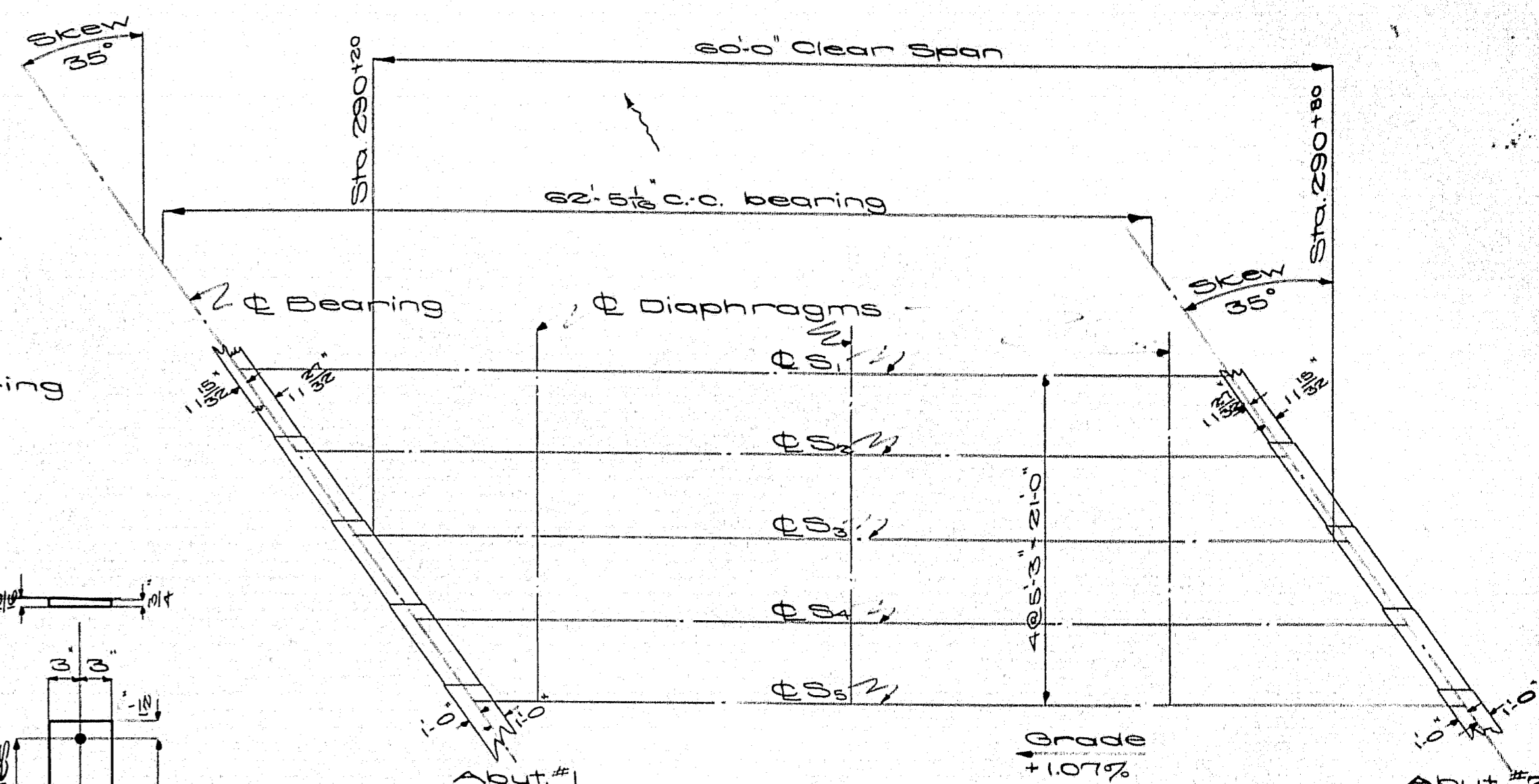


DRAIN DETAIL
4 REQ'D

Sketch showing method of setting masonry plates.



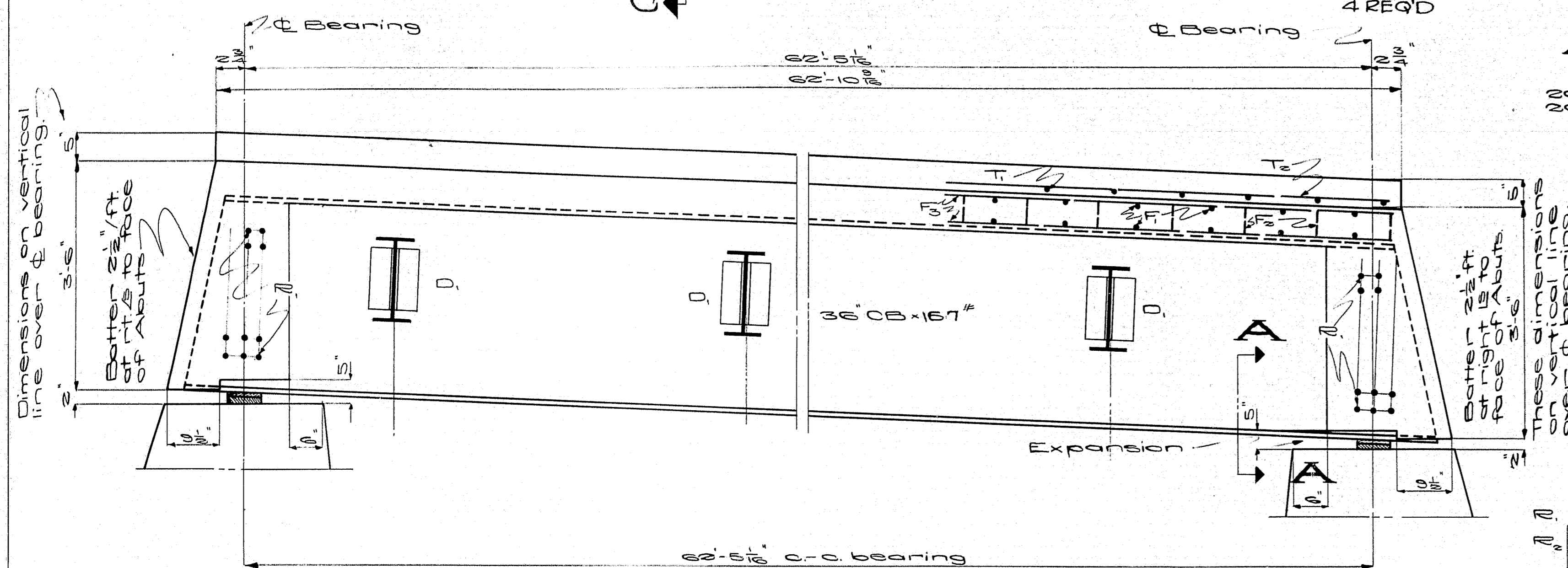
ANCHOR
BOLT
20-1/4" x 1-1/2" Bolts Req'd.
20-1/4" Hex. Nuts



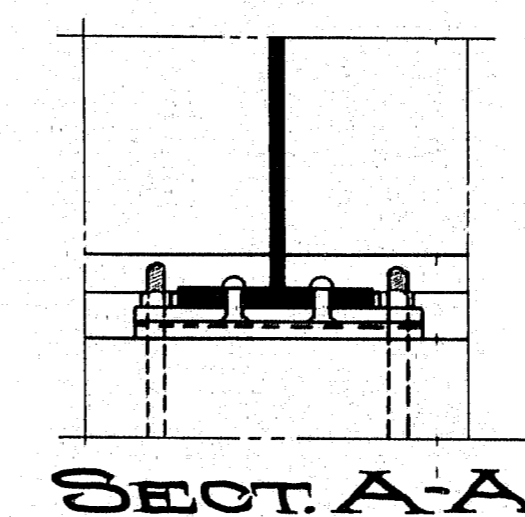
MASONRY
PLATE
10-1/2" x 1-1/2" Req'd.

LAYOUT PLAN

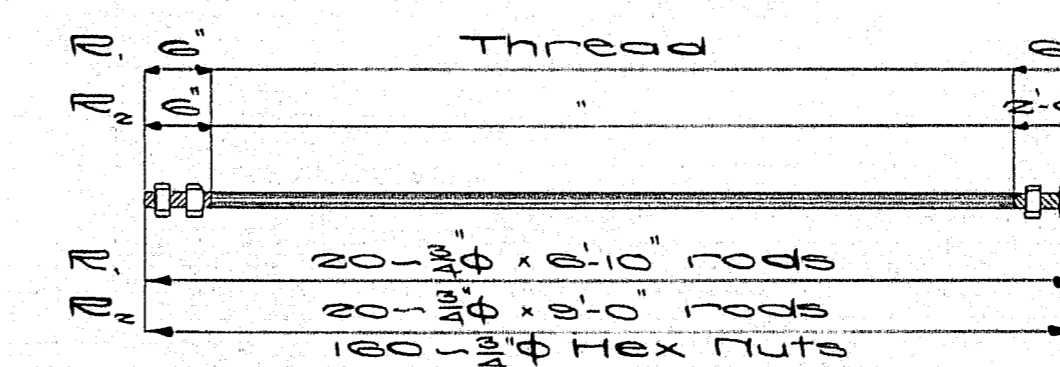
Note - Curb and slab to be cast together. Steel for posts to be set in curb. Precast rail bars in lengths of 5'-3". Place rail bars in position with ends projecting into post forms 2". Wrap ends with two thicknesses of light roofing felt. Fold in ends and when post forms are removed cut away all felt exposed. Chamfer all exposed edges of concrete 1/4" unless otherwise indicated.



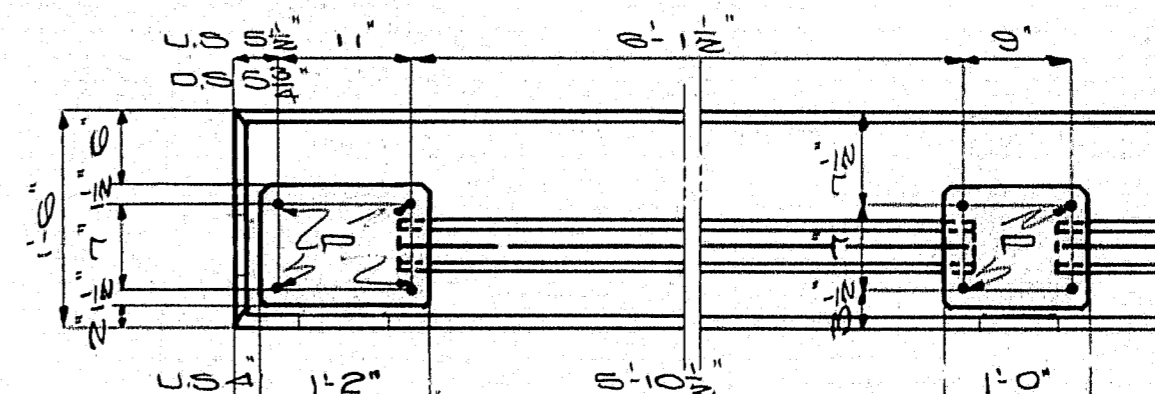
PART LONGITUDINAL SECT. C-C



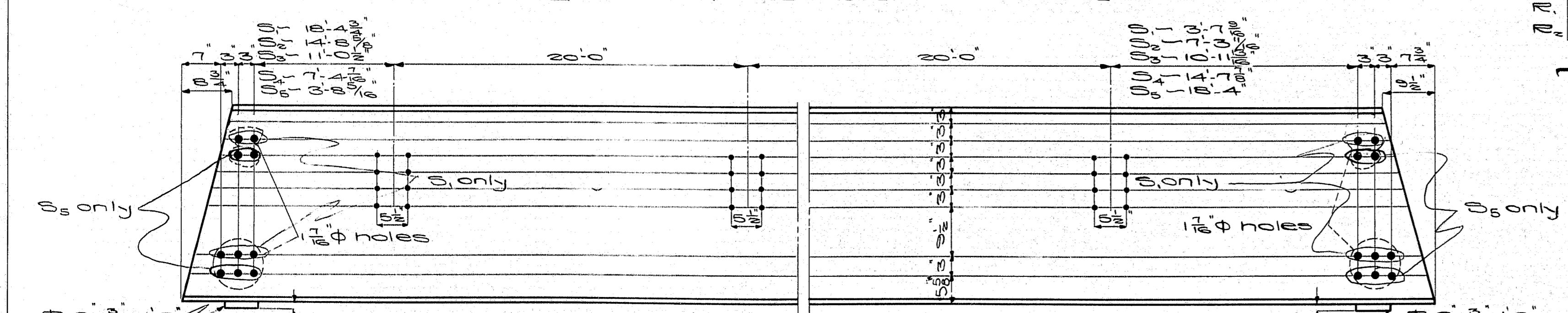
SECT. A-A



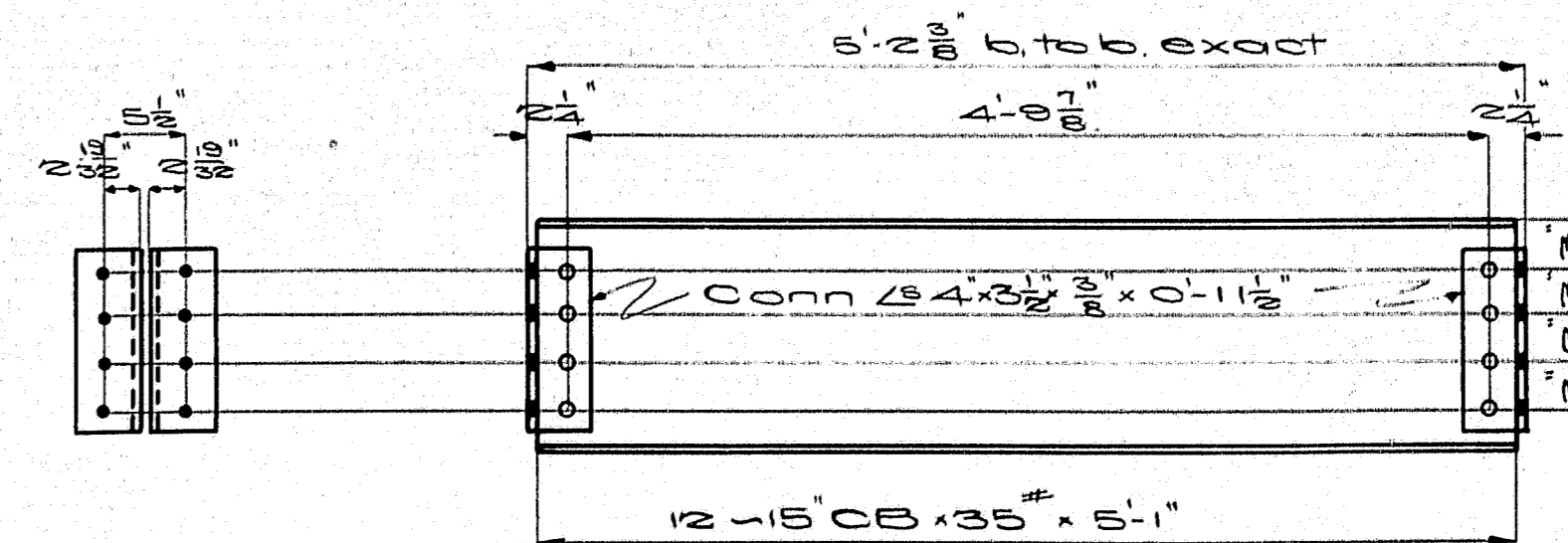
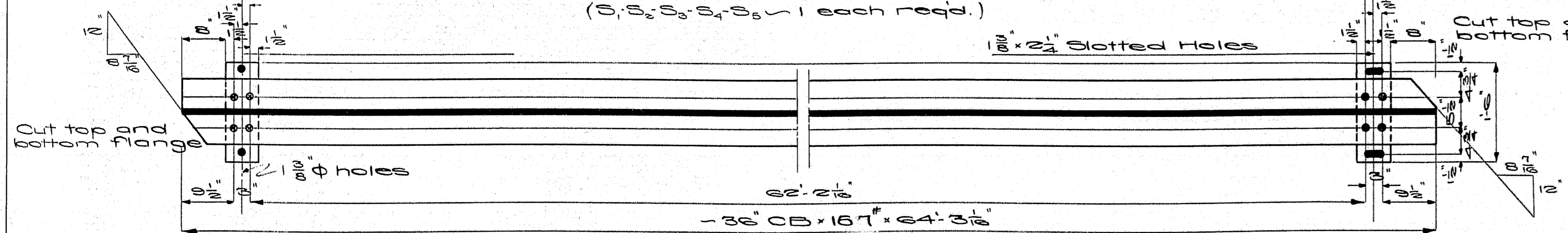
TIE ROD DETAIL



RAIL DETAIL



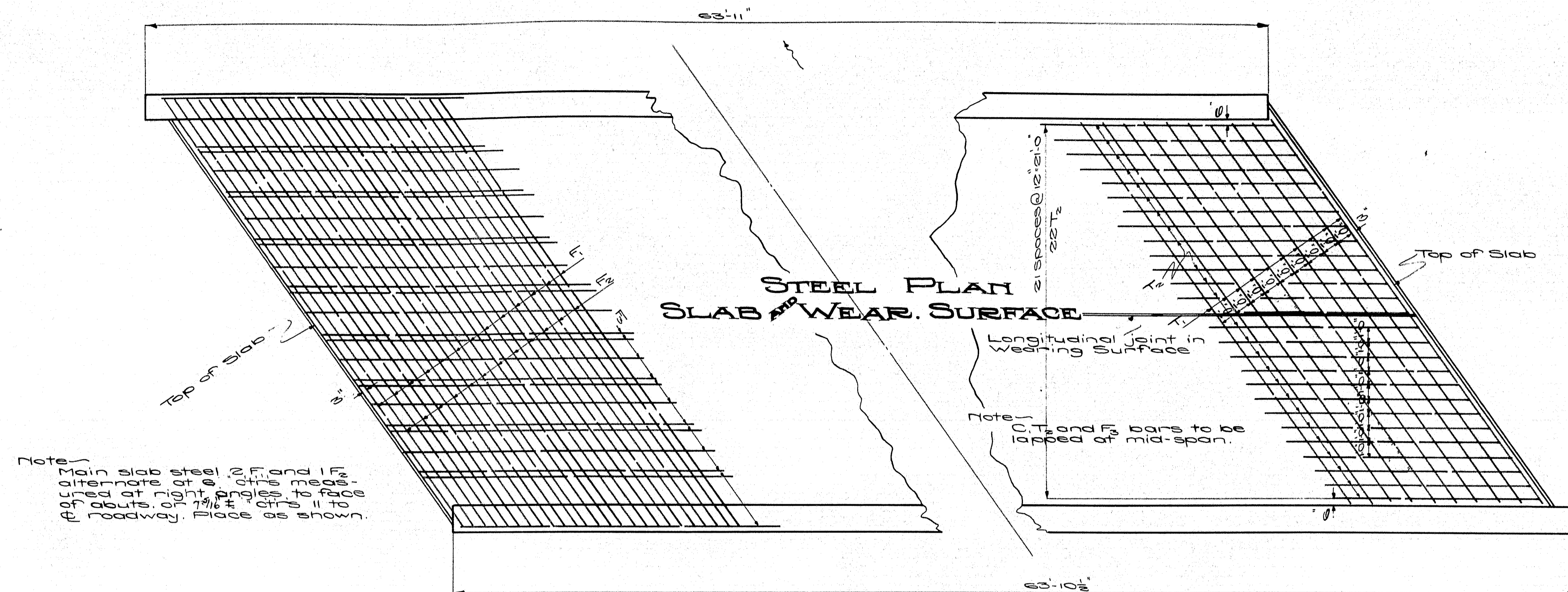
STRINGER DETAIL
(5, 3, 3, 3, 3, 1 each req'd.)



DIAPHRAGMS

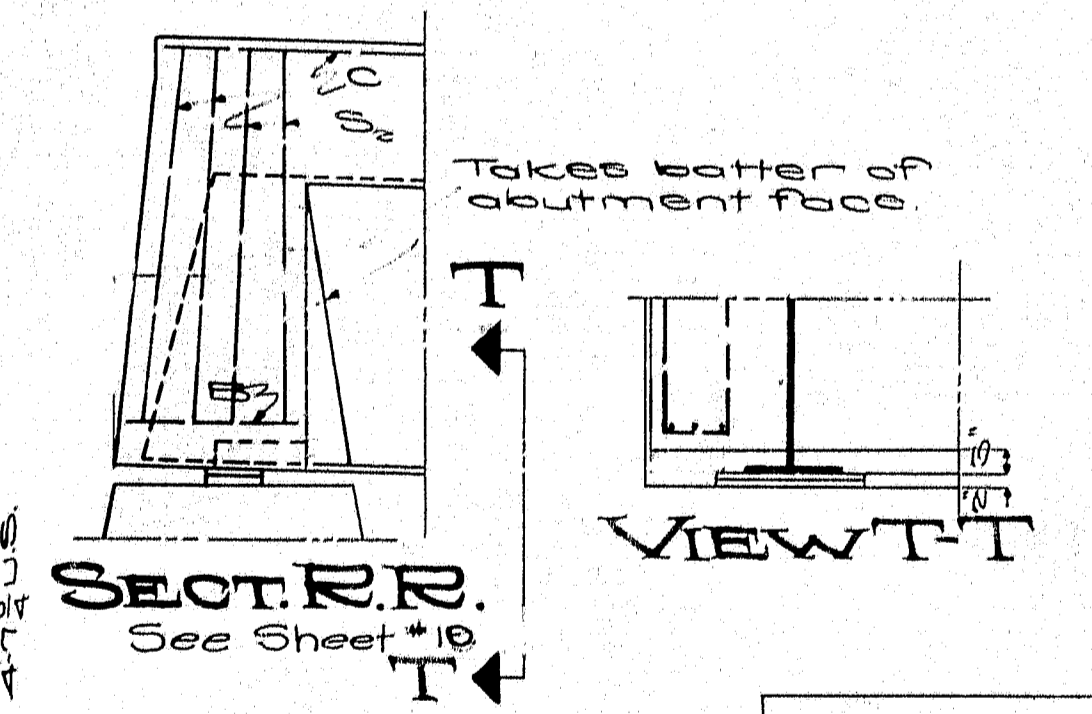
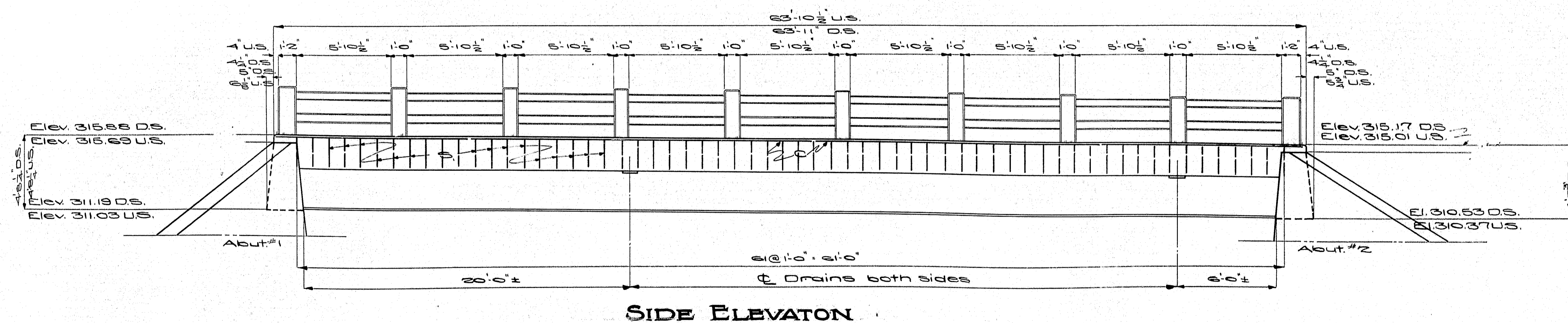
Note - All shop work to be riveted. All rivets 3/4". All open holes 1/4" unless otherwise indicated. Anchor bolts to be set 10' in masonry. All field connections 3/4" bolts. Chamfer concrete curbs 1/4" at the center to allow for dead load deflection of stringers. Live Loading - 15 ton Trucks.

Town - 04-21
Bridge - 2955
MAINE Highway Commission
BRIDGE DIVISION
WING BRIDGE
OVER
SANDY RIVER
IN THE TOWNS OF
PHILLIPS
FRANKLIN COUNTY
SUPERSTRUCTURE DETAILS
Sheet 10 of 11 Augusta, Me. Feb. 1938



Note: Main slab steel 2 F₁ and 1 F₂ alternate at 6" c/c's measured at right angles to face of abuts. or 7 1/2" c/c's 11' to roadway. Place as shown.

STEEL SCHEDULE				
F ₁ - 5/8" φ 5' Reqd. 33'-5 1/2" long - Slab				
S ₁ - 1/2" φ 124 Reqd. 4'-1 1/2" long - Curbs				
S ₂ - 1/2" φ 16 Reqd. 10'-7 1/2" "				
Straight Bars				
Mark	Size	No. Reqd.	Length	Location
F ₁	5/8" φ	104	30'-3"	Slab
F ₂	5/8" φ	48	34'-3"	"
T ₁	5/8" φ	8	34'-0"	Curbs
T ₂	5/8" φ	52	26'-8"	Wearing Surface
T ₂	5/8" φ	44	34'-0"	"
R	5/8" φ	72	2'-3"	Rail bars
P	5/8" φ	80	4'-0"	" posts
A	5/8" φ	48	8'-0"	Abuts.
B	5/8" φ	12	1'-10"	End Floor Beams
Note: All steel to be plain rounds of structural grade. All dimensions are given to centers of bars.				



Town - 04-21
Bridge 2955

MAINE HIGHWAY COMMISSION
BRIDGE DIVISION

WING BRIDGE
OVER
SANDY RIVER
IN THE TOWN OF
PHILLIPS
FRANKLIN COUNTY

BRIDGE DETAILS

Sheet 11 of 11 August, Me. Feb. 1933